



AVANT GARDE
COLLECTION 2025

 speira
GREEK HAND MADE
By Anna S

It's MORE than a BAG...



● Tote Frou Frou 003TOFROU

...it's a PIECE of ART

Have my own LOOK



● Tote Asymmetric Metallic 003TOASMET

Always CLASSY



● Tote Raffia 003TORAF



You've got
ME!



● Clutch Frou Frou 002CLFROU

It's all about my **STYLE**



● Tote Frou Frou 003TOFROU



All time FASHIONable



● Mini Frou Frou 001MIFROU

Fly me UP!



● Flap Shoulder 013FLSH

ELEGANCE is my style



● Clutch Raffia 002CLRAF



● Resort Raffia 012RSRAF



Be my own MUSE

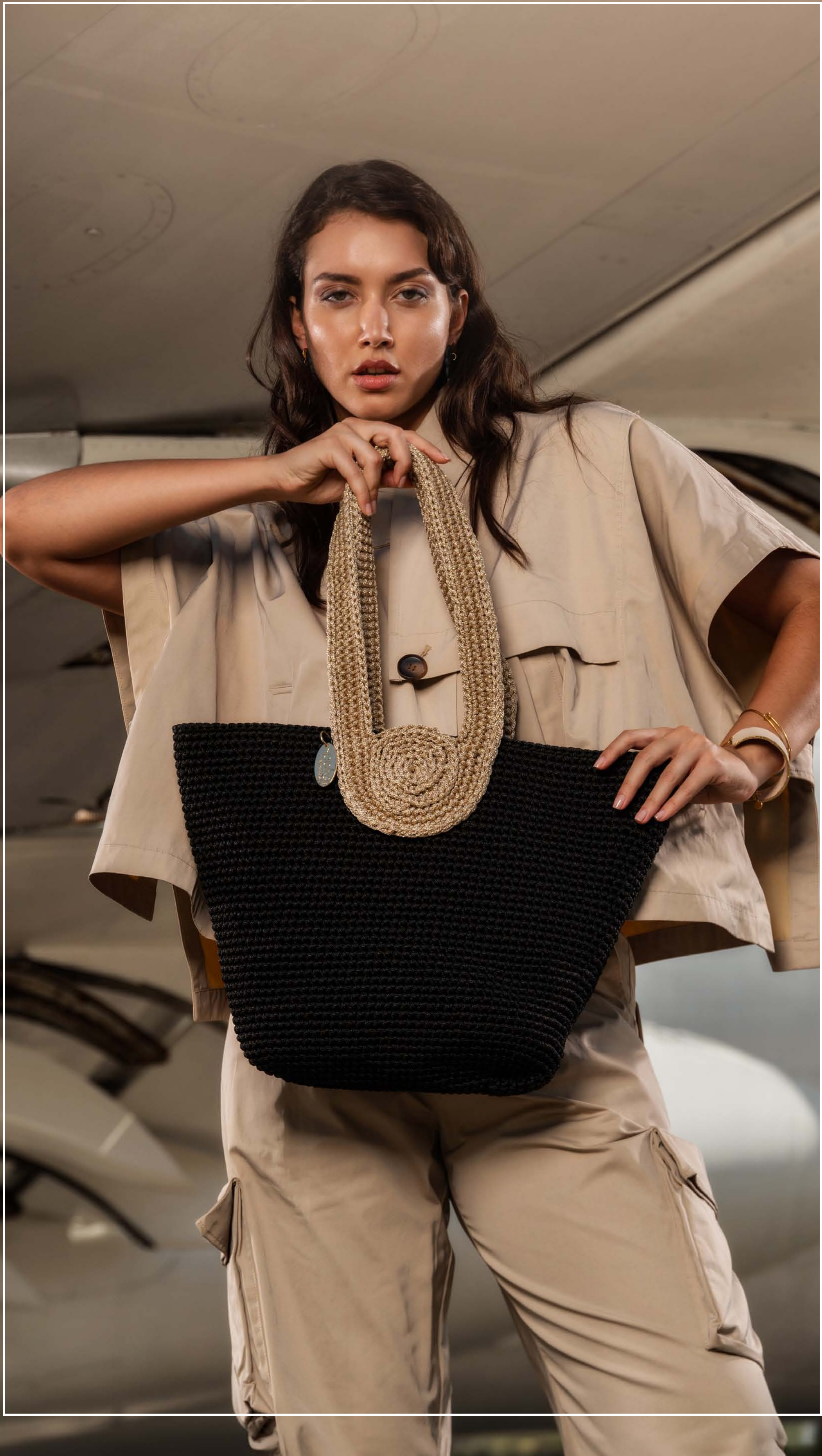


More than CHIC

● Tote Raffia Bamboo 003TORABMB



Everytime feel CLASSY

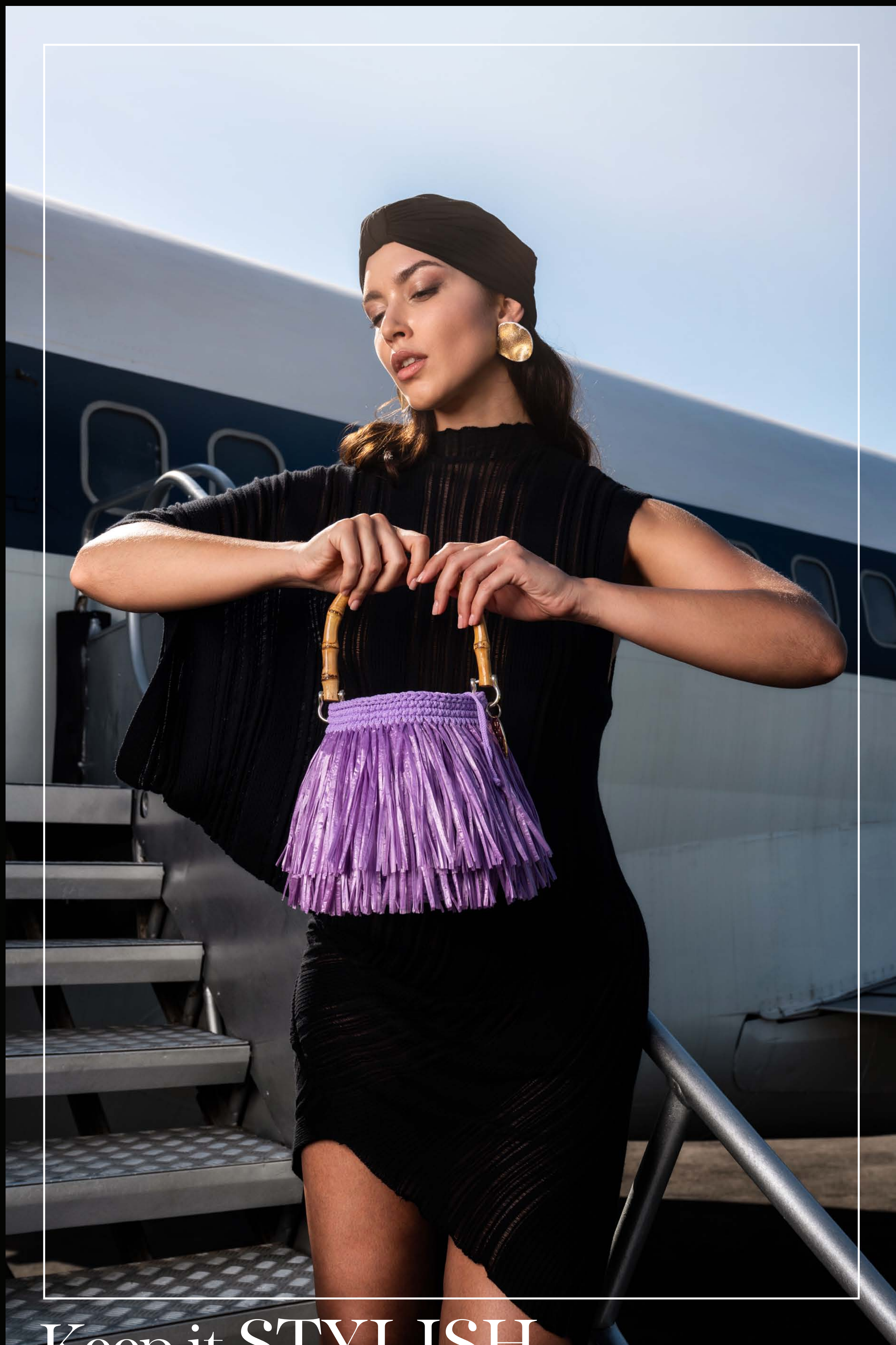


● Round Shopper Speira 015ROSHSP

● Tote Asymmetric 003TOAS



Fashion is all about ME



Keep it **STYLISH**

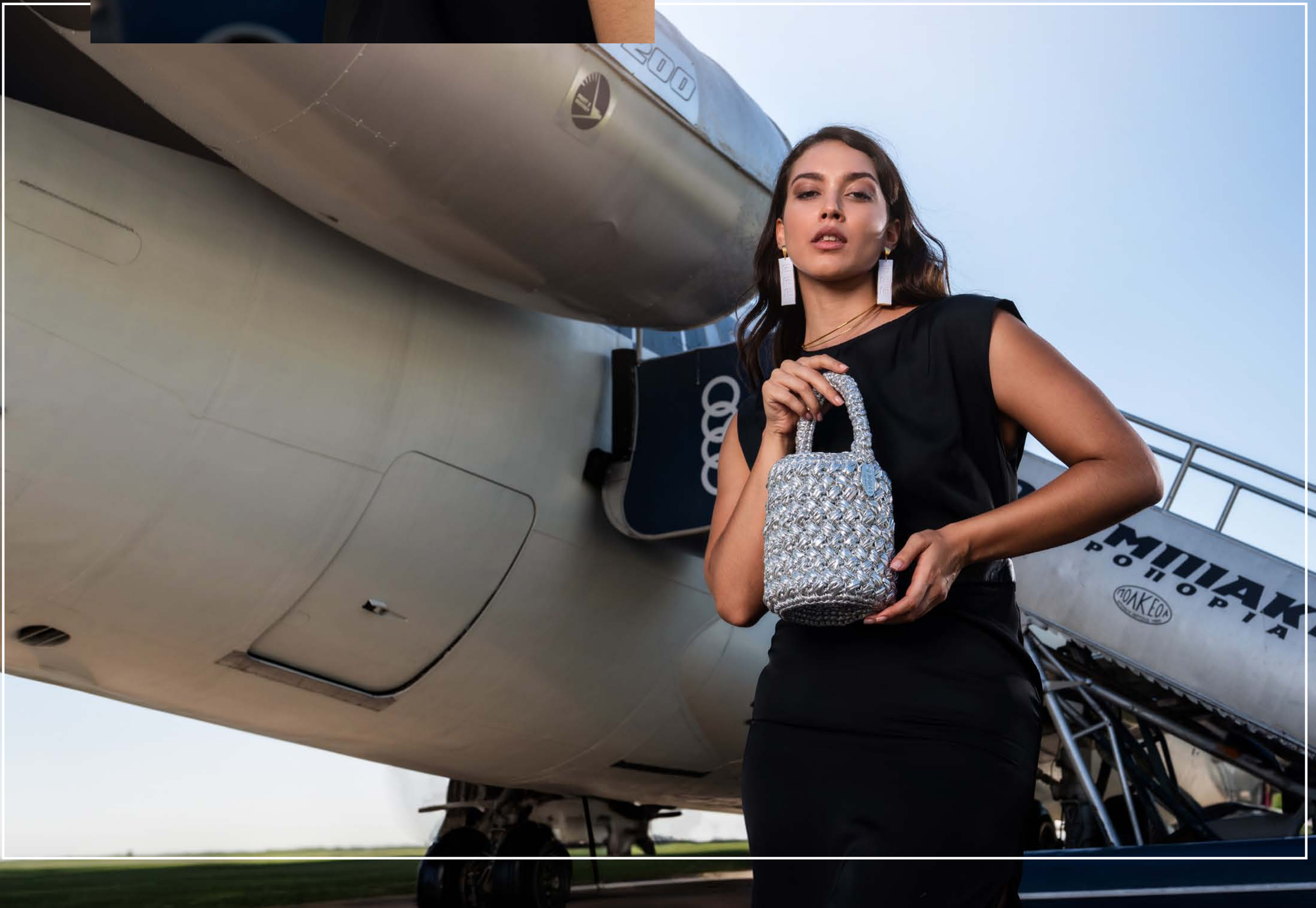
DEFINE myself



● Vintage Style Clutch 004VICL



Look at ME!



● Bucket Metallic 017BCMET

● Flap Shoulder 013FLSH



Photographer: Panagiotis Simopoulos ● Fashion Editor & Concept Director: Dimitris Grammatikoyiannis

 **speira**
GREEK HAND MADE
By Anna S

Achilleos 65 & Seirenon 99, 17562 Palaio Faliro, Athens, Greece.
+30 210 98 27 364, +30 6934 500 560
www.speira-bags.gr ● info@speira-bags.gr